



ADVANCED TELEMATICS SYSTEM - CVS

Klemen Jamšek, CVS Mobile d.d.





The Company

CVS Mobile is the leading company in telematics systems. We specialise in developing telematic tracking systems for various activities. Highly effective and reliable solutions for a multitude of industry branches and the adaptation of telematic solutions to companies and their needs are our main competitive advantages.

We provide high value and enjoy the trust of our customers by providing full and comprehensive support, which is implemented in the field as well as remotely. All our solutions are based on the newest information solutions and services and we provide a comprehensive offer for our customers – from the design stage, development and engineering to the implementation of the solution. The solutions excel in high added value and a quick return on investment.



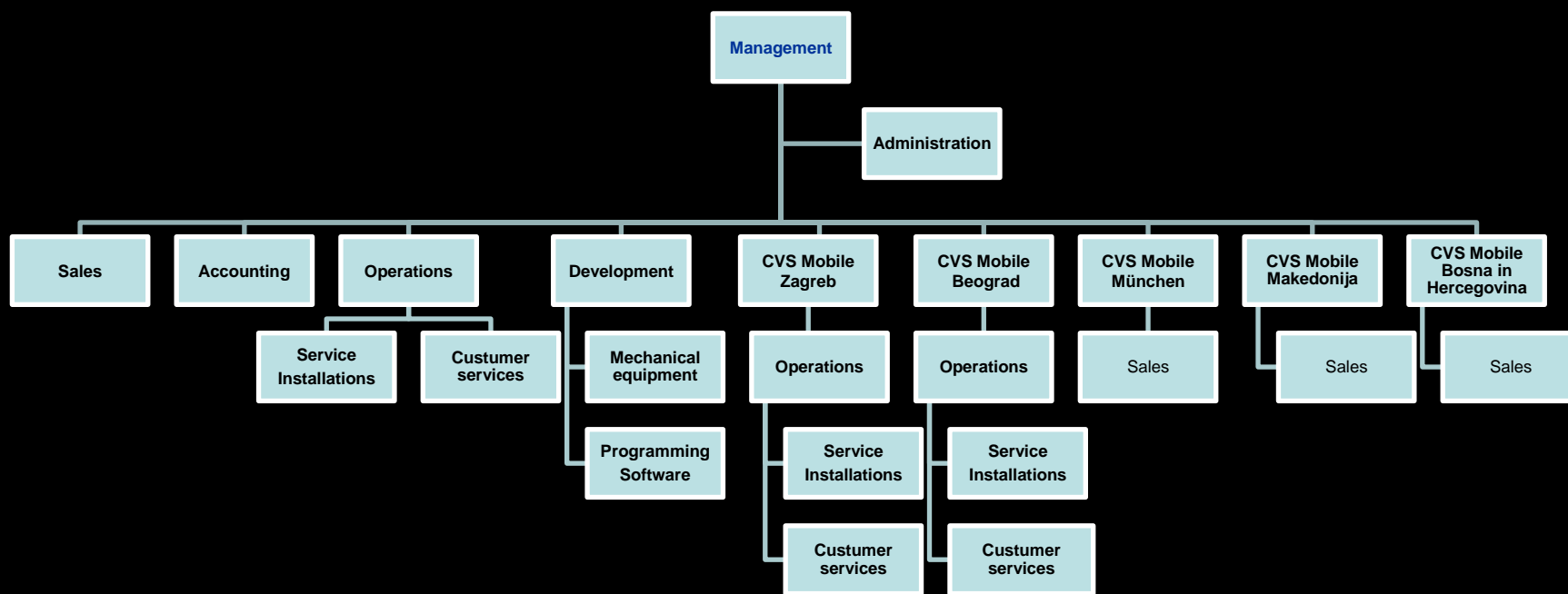
MISSION



Our business vision is to become a reliable and competent partner in the entire area of the tracking, navigation and management of vehicle fleets. Cooperation with international research and development companies ensures fresh knowledge, allowing to implementation of even the most demanding projects. We are proud on our business excellence, professionalism, teamwork, consistency and reliability



Struktura podjetja CVS Mobile d.d.



CVS Telematics



- ▶ *Fleet management and telematics*
- ▶ *Support for business processes*
- ▶ *Resource management*



System Architecture



Elements of telematics system



Modem



Terminal



Navigation



GSM / GPS antenna



Printer



Barcode reader



Driver registration



CAN bus DATA



CAN bus TEMPERATURE



Application Modules



Application for fleet management is designed to optimize the working time and costs at all levels of your business.



NET Mobile Service operates as part of MAP Mobile Applications and is designed for companies that need frequent communications with drivers and capture the predefined events for all basic work units (drivers, fitters, drivers of building machines ...).



Application Modules

Web Applications



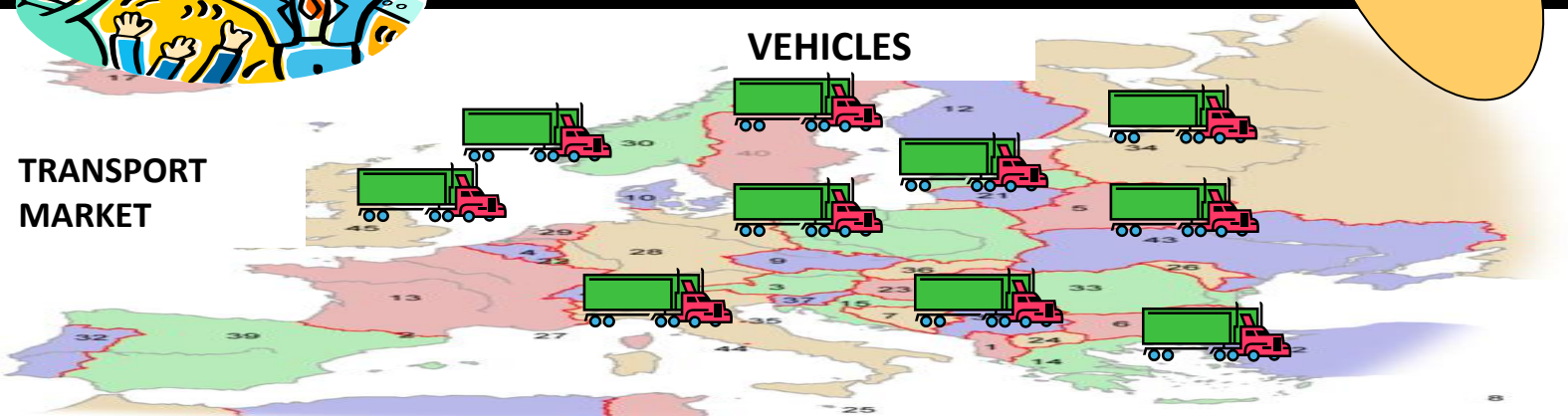
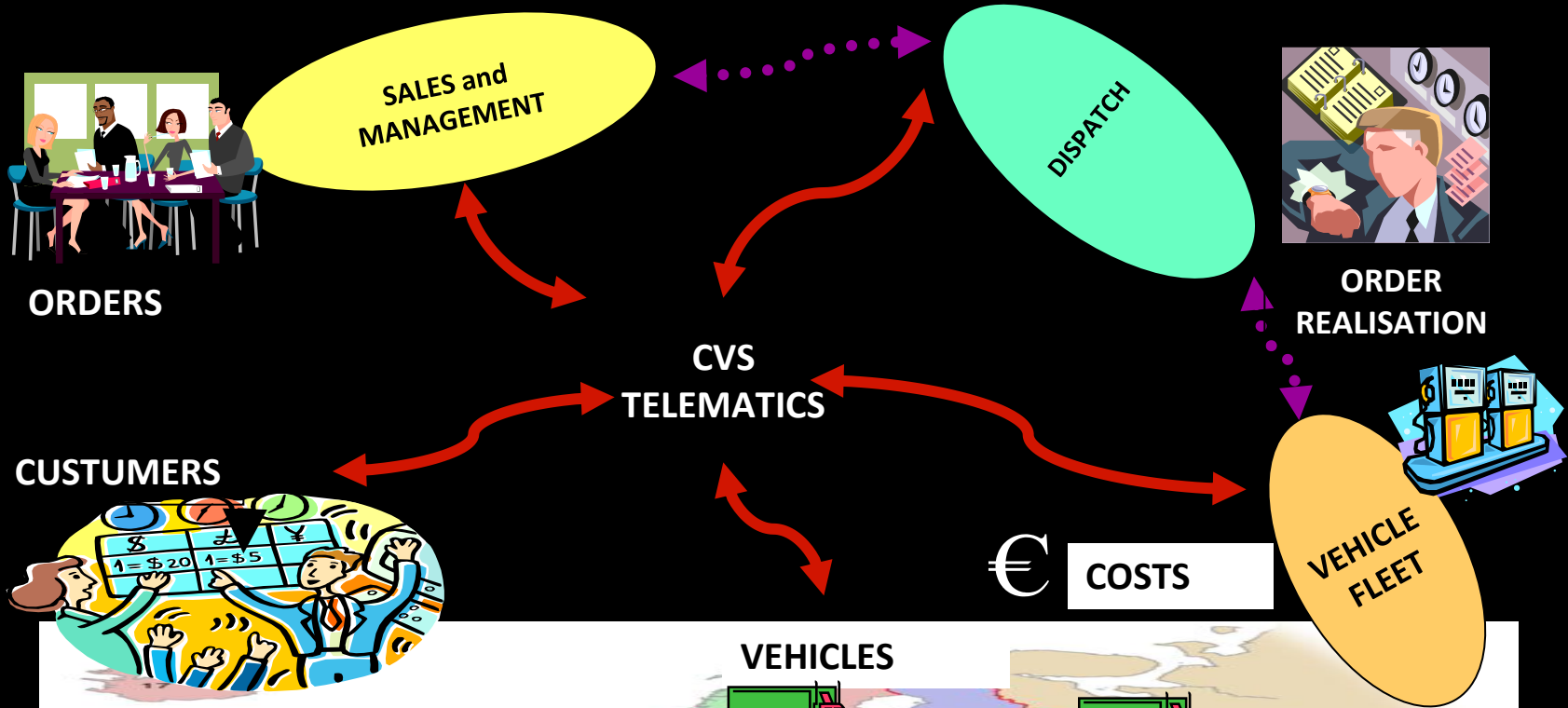
Mobile Web is an Internet application that enables fleet control (similar to Mobile MAP) via Internet Explorer, Mozilla Firefox. It is primarily intended for clients that need only limited functionality and services of Mobile MAP and NET.

Mobile WAP service is intended for owners and fleet managers. It offers easier and faster access to information about the condition of vehicles. The current state of the vehicles (video and / or text) can be shown on a personal mobile GSM phone. The application provides access to all data that are available in Mobile MAP (control over the state of rolling stock).



DAT Mobile is a data communication interface, which serves to link the various existing information systems or databases from the subscriber. It is intended primarily to transfer data on the travel orders, mileage ... and custom-made applications to the mobile Net.

The role of CVS telematics system in the working processes of transport companies

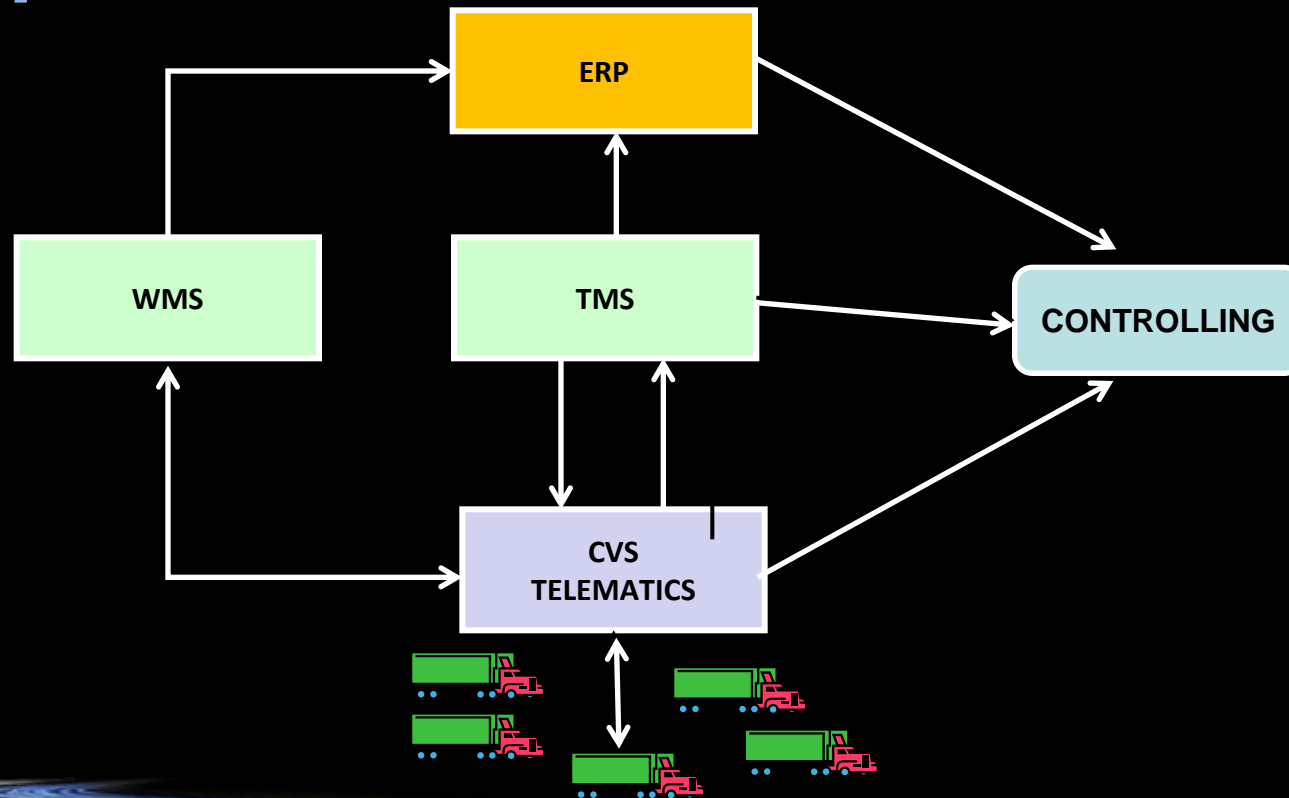


Advantages and benefits

- Work time optimisation
- Continuous vehicle tracking
- Route history
- Data analysis (transport orders, vehicle usage and stops, ...)
- Current status of the entire vehicle fleet
- Control over fleet costs
- Route optimisation
- Communication to and between drivers
- Current status of driver/vehicle
- Driver registration
- Automatic data capture (CAN bus)
- ...



Example of CVS telematics integration into business information system of logistics companies



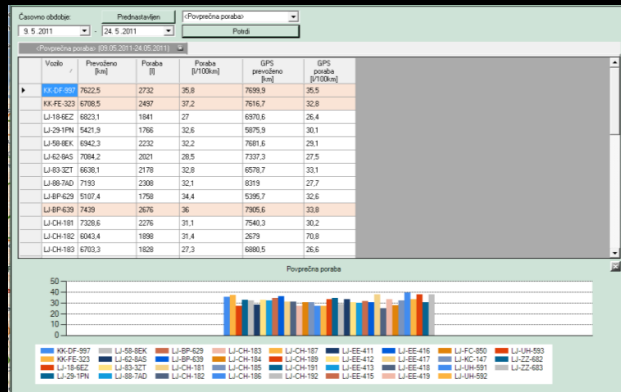
Services of CVS MOBILE MAP application



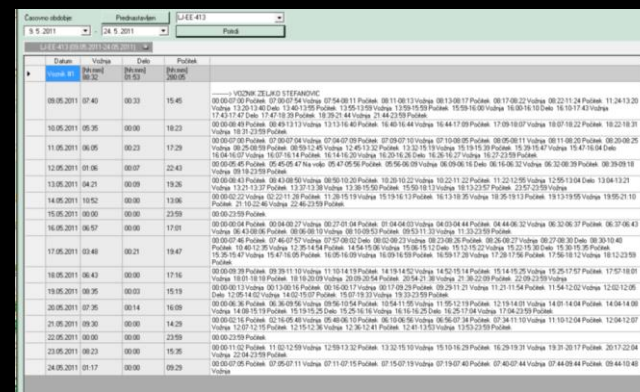
Real-time tracking and monitoring



Route planning and analysis



Fuel consumption



Ensuring compliance with legal demands - Taho



Thank you for your attention.

klemen.jamsek@cvS-mobile.com

